

**ALASKA DIVISION OF HOMELAND SECURITY &  
EMERGENCY MANAGEMENT**  
SITUATION REPORT 24-060 • February 29, 2024



Toll-Free 1.800.478.2337

Anchorage Area 907.428.7000

SEOC 907.428.7100

<p><b><u>SEOC Preparedness Level</u></b>  Level 1 – Routine Operations.</p>	<p><a href="http://ready.alaska.gov">http://ready.alaska.gov</a></p>	<p><b><u>National Terrorism Advisory System:</u></b>  <a href="#">Read the NTAS Bulletin here</a></p>
<p><a href="#">Maritime Security (MARSEC)</a> Level:1- Minimum Appropriate Security Measures</p>	<p><b>WHO Novel Coronavirus Pandemic (COVID-19):</b> <a href="#">2019 Novel Coronavirus</a></p>	<p><b><u>Alaska Military Installation Force Protection Level:</u></b> FPCON Bravo</p>

(Significant changes from previous situation reports are red.)

**Significant Issues:**

**Kotzebue – Frozen Water Lines**

SEOC continues to support and monitor this event.

**Quinhagak Power Outage Disaster**

The State Individual Assistance application hotline and website are open for Quinhagak residents at <https://www.ready.alaska.gov/Recovery/IA> or by phone at 1 (844) 445-7131. The deadline to apply for State Individual Assistance is March 2, 2024.

**State of Alaska Department of Health (DOH)**

The DOH stands ready to assist with all aspects of public health and, in the event of a public health emergency, is supported by the SEOC and other state departments as required.

For current information, see: <https://health.alaska.gov/dph/Pages/default.aspx>  
<https://health.alaska.gov/dph/Emergency/Pages/prepared/default.aspx>

**NTAS Bulletin**

The U.S. Department of Homeland Security issued an updated National Terrorism Advisory Bulletin on May 24, 2023. The current and expired bulletins can be viewed at the below link.

<https://www.dhs.gov/national-terrorism-advisory-system>

**Travel Alerts and Conditions**

**Richardson Highway Closed MP 19-46.**

For current driving conditions, dial 511 or visit: <https://511.alaska.gov/>

## **Barry Arm Landslide / Tsunami Risk**

For the latest information on the Barry Arm Landslide and Tsunami risk, click here:

<https://dggs.alaska.gov/hazards/barry-arm-landslide.html>

## **Earthquakes**

United States Geological Service (USGS) Earthquake Information: <http://earthquake.usgs.gov/>

National Tsunami Warning Center: <http://tsunami.gov/>

## **Alaska Volcanoes**

**Great Sitkin** Alert Level: **Watch** and Aviation Color Code: **Orange**

**Kanaga** Alert Level **Advisory** and Aviation Color Code: **Yellow**

**Shishaldin** Alert Level: **Watch** and Aviation Color Code: **Yellow**

**Gareloi** Alert Level: **Advisory** and Aviation Color: **Yellow**

For Alaska Volcano updates, go to: <https://www.avo.alaska.edu/>

## **Air Quality Index (AQI) Advisories**

For the most up-to-date Air Quality Index Advisories:

<http://dec.alaska.gov/Applications/Air/airtoolsweb/Home/Index>

## **Spills of Oil and Hazardous Substances**

The Alaska Division of Environmental Conservation (ADEC) Spill Prevention and Response page is located at:

<https://dec.alaska.gov/spar/>

## **Alaska Cyber Security Information**

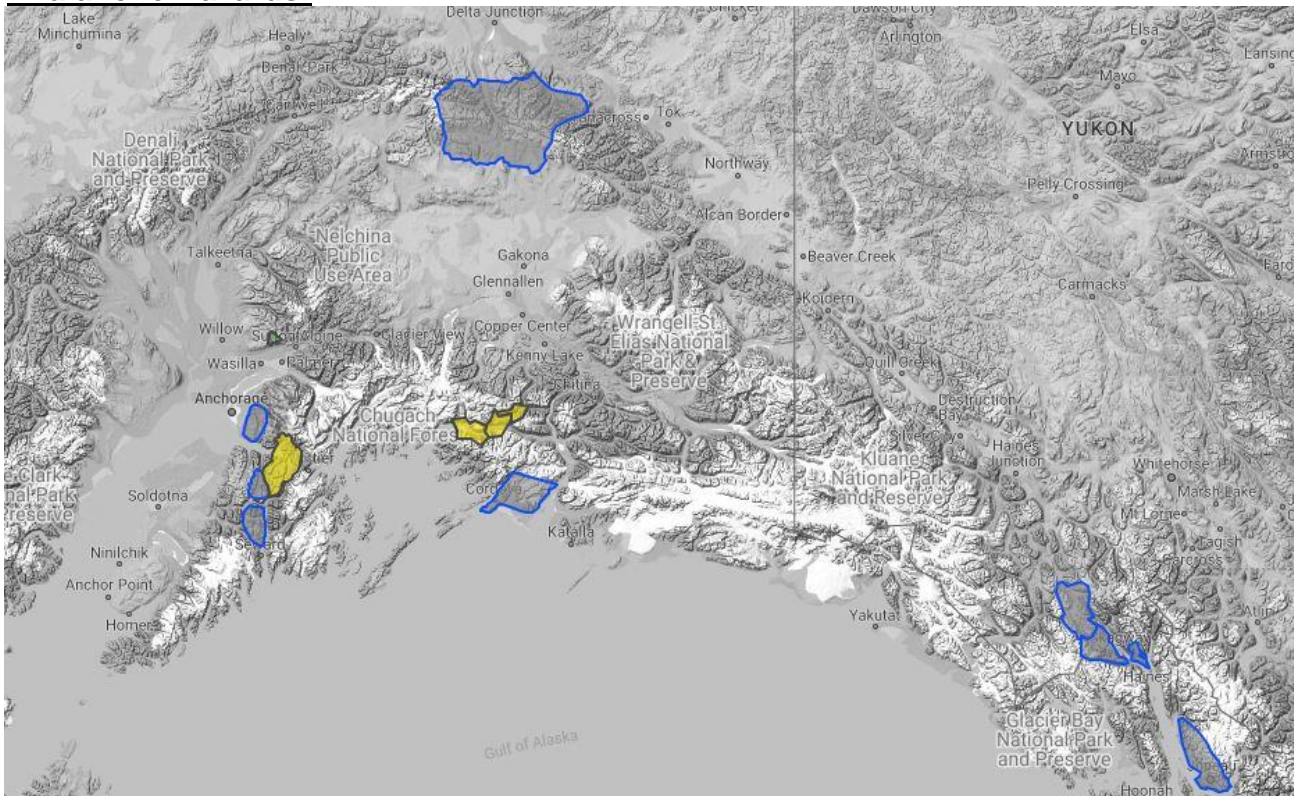
State Employees may sign up for cybersecurity notifications and alerts at

<https://oit.alaska.gov/security>

Cybersecurity and Infrastructure Security Agency (CISA)-Cybersecurity Services and Tools:

[www.cisa.gov/free-cybersecurity-services-and-tools](http://www.cisa.gov/free-cybersecurity-services-and-tools)

## Avalanche Hazards:



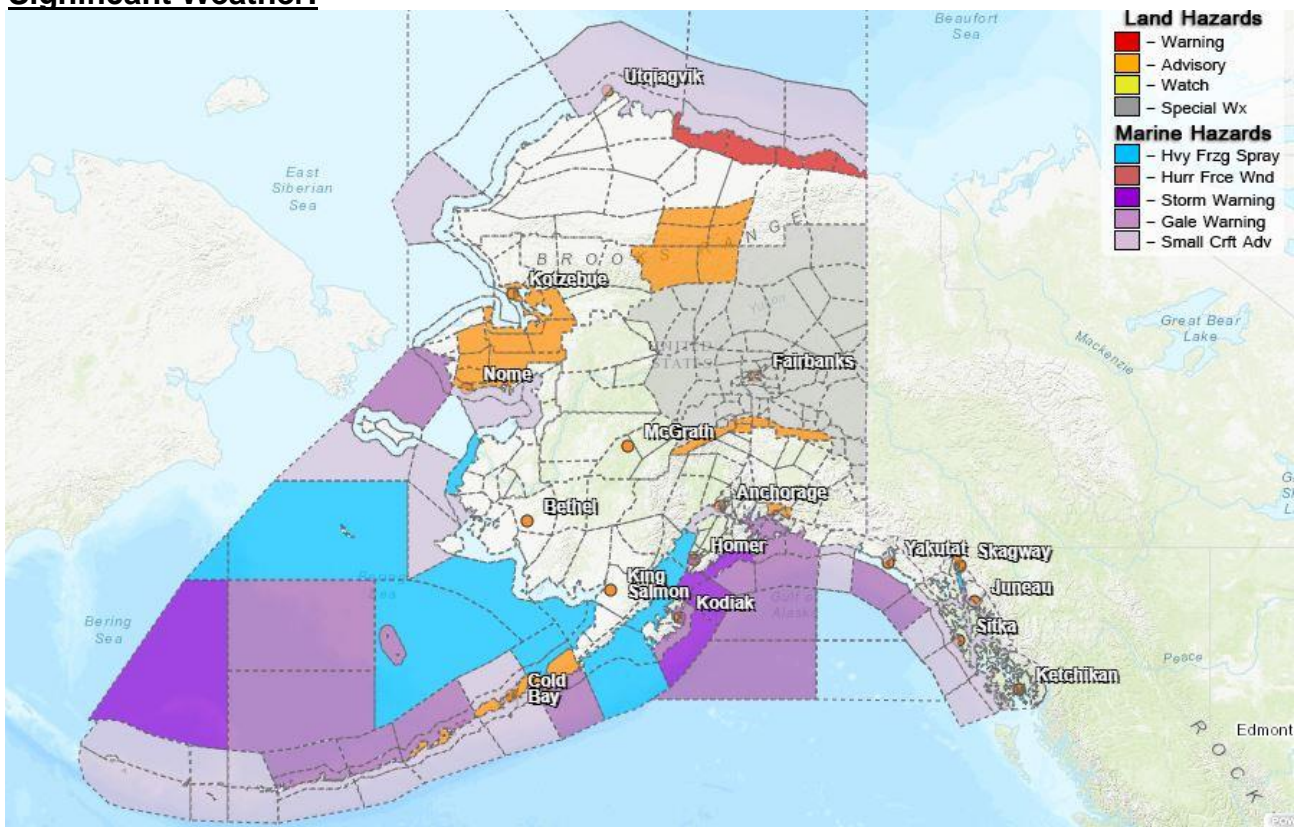
Travel in avalanche terrain is not recommended. Avoid being on or beneath all steep slopes.

**Turnagain Pass** – Moderate above 1000 ft, Low below 1,000ft.

**Valdez** – Moderate at all levels.

For more information and the most current avalanche conditions, go to <https://alaskasnow.org>

## Significant Weather:



### Winter Storm Warning

- **Eastern Beaufort Sea Coast**- In effect until 3am Friday.

### Winter Weather Advisory

- **Eastern Alaska Range South of Trims Camp** – Until 10am Friday.
- **Central Beaufort Sea Coast** – Until 3am Friday.
- **Eastern Aleutians** – Until 9am Friday.
- **Pribilof Islands** – Into Friday night.
- **Alaska Peninsula** – Until 3pm Saturday.

### Wind Chill Advisory

- **Southern Denali Borough**– Until 10am Friday
- **Central Brooks Range, Southern Seward Peninsula Coast; Interior Seward Peninsula, Lower Kobuk Valley; Baldwin Peninsula, South Slopes Of The Central Brooks Range**– Until 3pm this afternoon.
- **Municipality of Skagway** – Until noon Friday.
- **Northeast Prince William Sound** - Until noon Sunday.

### Special Weather Statement

- **South Slopes Of The Eastern Brooks Range; South Slopes Of The Central Brooks Range; Upper Koyukuk Valley; Dalton Highway Summits; Yukon Flats; White Mountains and High Terrain South of the Yukon River; Fortymile Country; Upper Tanana Valley; Delta Junction; Upper Chena River Valley; Tanana Flats; Eielson AFB and Salcha; Goldstream Valley and Nenana Hills; Chatanika River Valley; Two Rivers; Fairbanks Metro Area; Nenana; Central Interior; Northern Denali Borough; Southern Denali Borough; Eastern Alaska Range North of Trims Camp; Eastern Alaska Range South of Trims Camp** – Very Cold Across The Interior Through The Weekend.

For more information and the most current weather, Watches / Warnings / Advisories go to:

<https://www.weather.gov/arh/>

**The Next Situation Report** will be **February 30, 2024**. A significant change in the situation or the threat level will prompt an interim report. This report is posted on the internet at <https://ready.alaska.gov/sitrep>.

To register for email distribution, go to <http://list.state.ak.us/mailman/listinfo/dhsem.situation.report>. Direct questions regarding this report to the SEOC at 907-428-7100 or [seoc@alaska.gov](mailto:seoc@alaska.gov).